

ASPEN INTEGRATION + WIRELESS COMMUNICATION =
CONNECTED™ PANEL TECHNOLOGY



ASPEN  AVIONICS™

A New Way to Look at Avionics™

NETWORK PANEL-MOUNTED INSTRUMENTS WITH HANDHELD SMART DEVICES



CONNECTED™ PANEL TECHNOLOGY

Connected™ is a revolutionary, patent-pending technology that connects your mobile devices to your aircraft's panel-mounted avionics.

Evolution Flight Displays are designed to network with a variety of certified avionics from many manufacturers, making the Evolution system a natural nexus for access to and control of flight data.

A Gateway to Integration

The Connected™ Panel system includes hardware, software and application components that provide two-way wireless communications between portable smart devices and panel-mounted avionics. The power to streamline flight-related activities is enabled via Aspen's Evolution Flight Displays and a blind-mounted Connected Gateway box.

Aspen's Connected™ Pilot software application provides configuration of and access to panel communications. Initially, the Connected™ Pilot app will be available for the Apple iPad via Apple's iTunes Store. Development for Connected™ Panel Enabled apps and products is open to other platforms, such as Android, to meet pilot demand.

A Gateway to Innovation

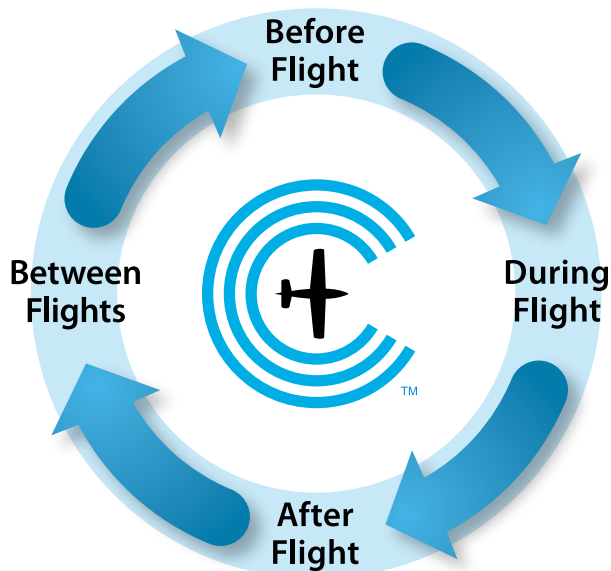
A growing suite of Connected™ Panel Enabled apps from a vibrant community of developers promise to not only make your favorite apps more useful and powerful, but you can anticipate innovation beyond the bounds of any current products. The best uses of Connected technology will be as surprising as they are powerful.

See aspenavionics.com/availability for product availability dates.

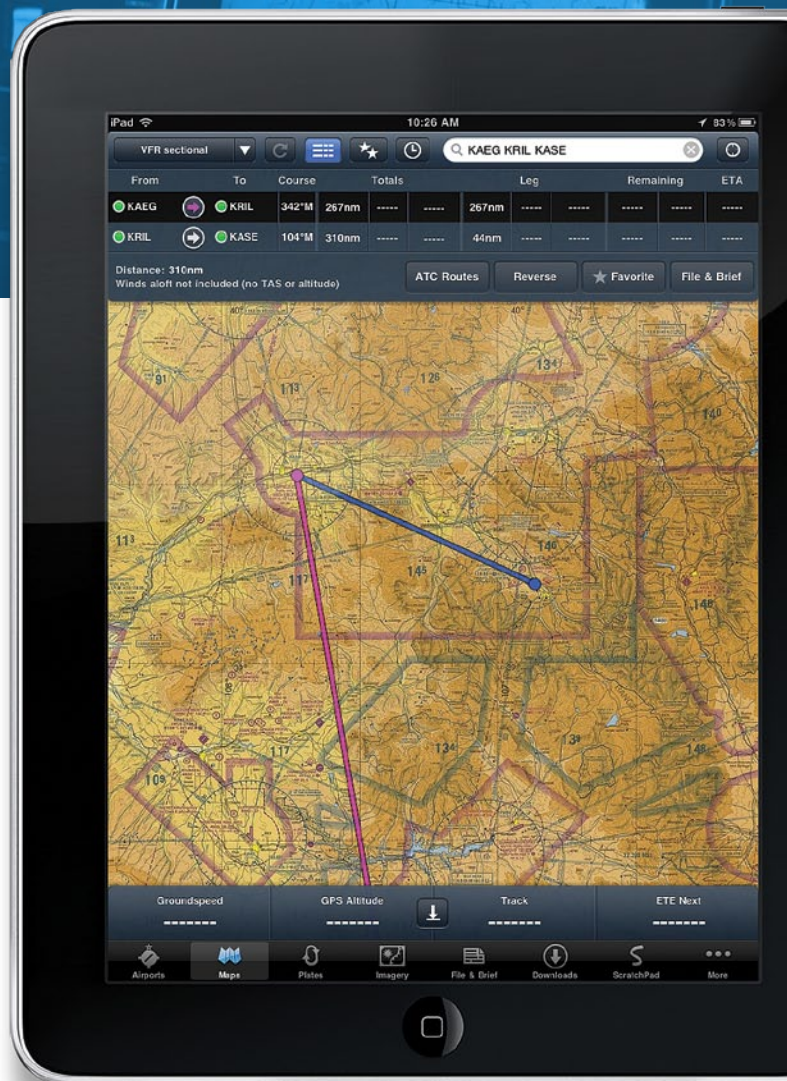
A POWERFUL PLATFORM OPEN TO
DEVELOPERS FOR ANY SMART DEVICE

UPLOAD YOUR FLIGHT PLAN,
TUNE YOUR RADIO WITH A TOUCH,
RECORD FLIGHT DATA,
AUTOMATE MAINTENANCE RECORDS...
THE POSSIBILITIES ARE ENDLESS.

*Until now, smart devices have been limited —
unable to communicate with onboard systems.*



*Connected™ Panel technology allows you to tie your world
together seamlessly into a fully integrated flying experience.*



ForeFlight Mobile app shown.



CONNECTED™ PARTNERS

AVCONNECT

FLTPLAN.COM

SEATTLE AVIONICS SOFTWARE

AVIDYNE

FOREFLIGHT

PARROT

BENDIX/KING BY HONEYWELL

HILTON SOFTWARE LLC

PINNACLE AEROSPACE

BLACKBOX AVIATION SYSTEMS

IFLIGHTPLANNER.COM

PS ENGINEERING INCORPORATED

CORADINE AVIATION SYSTEMS

JEPPesen

SPORTY'S PILOT SHOP

DIGITAL SECTIONAL

J.P. INSTRUMENTS



**CONNECTED™
PANEL ENABLED**

A vibrant community of partners – inside and outside the aviation industry – are developing applications and products using Connected™ Panel technology.

Visit **connectedpanel.com** for the latest information about Connected™ technology, including links to Connected™ Panel Enabled applications and hardware from launch partners and other developers.



connectedpanel.com

ASPEN AVIONICS™

A New Way to Look at Avionics™

www.aspenavionics.com

System requirements: Evolution Flight Display, CG100 Connected Gateway hardware, Connected Pilot app, and a compatible smart device.
Copyright 2012 Aspen Avionics Inc. "Connected," the Connected logo, "Evolution," "Aspen Avionics," and the Aspen Avionics aircraft logo are trademarks of Aspen Avionics Inc.
— all rights reserved. Partner application names and product names, and logos are trademarks of their respective companies. iPad is a trademark of Apple Computer. Images of iPads represent no endorsement by Apple Computer.

091-00030-001 REV B